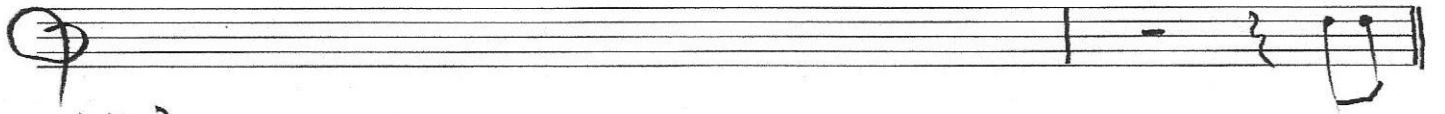


Handwritten musical score on a page with multiple staves. The score is written in treble clef and includes a key signature of one flat (B-flat). The notation consists of several systems of staves, each with a melodic line and a corresponding chord line. The chords are labeled with letters and symbols: Am, Dm, HΦ, E7b9, Cm7, F7, BbΔ, and /E. The melody features eighth and sixteenth notes, often beamed together, and includes rests and phrasing slurs. The chord line uses a similar rhythmic notation with stems and flags to indicate the timing of the chords. The score is organized into four systems, each containing a melodic staff and a chord staff. The first system starts with a treble clef and a common time signature. The second system includes a key signature change to one flat. The third system continues the melodic and harmonic development. The fourth system concludes the piece with a double bar line. There are several empty staves at the top and bottom of the page, suggesting this is a page from a larger manuscript.



Dm7



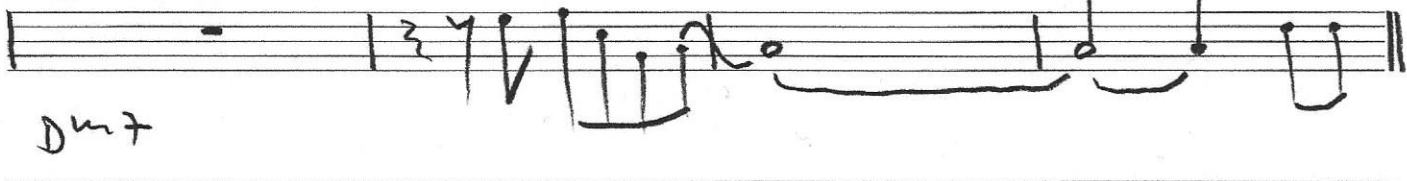
Bb7



Fm7



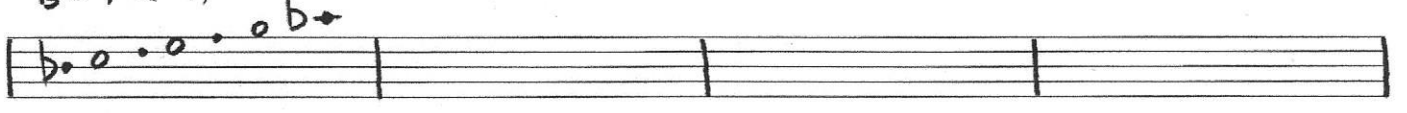
Dm7



Dm7



Bb7(#4)



Fm7



Dm7

